

# Quilt*mag*ine

## For Nolting Quilting Machine's

### Calibrate

In **Quiltmagine** it is referred to as screen scaling or calibration. This allows us to get more exact measurements which is very important when fitting designs into blocks or pantographs (avoiding edge to edge designs finishing short when stitching out a row). In other words what's mimicked on the screen portrays what will be quilted.

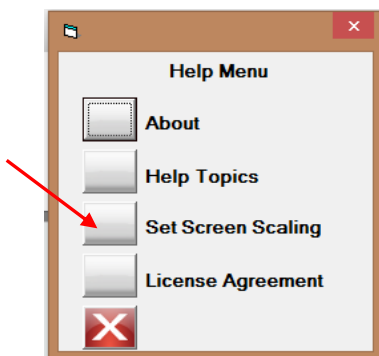
1. Measure and cut a piece of paper 3" square. (This needs to be accurate)
2. In the opening screen on the Left Hand side under the heading **Design and Create**, Tap Pantograph, note: you may be asked to Set the safe Area, is so simply follow the prompts.



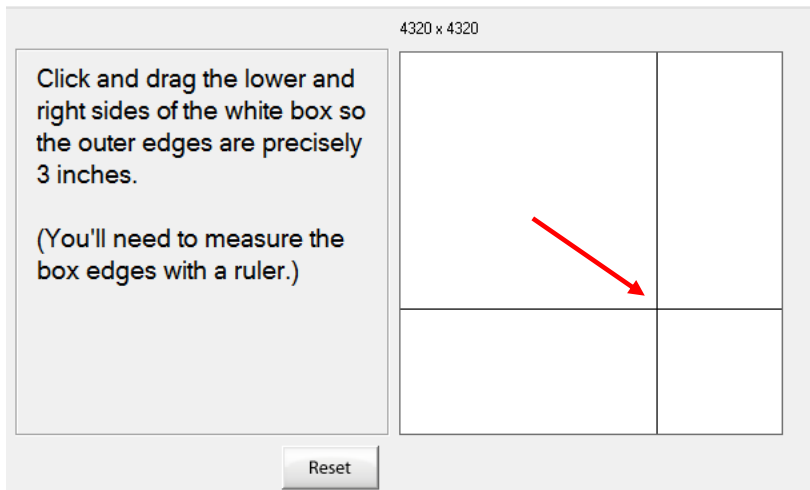
3. Tap Help



4. Tap Set Screen Scaling



5. Now **Place** the 3" square piece of paper on the screen that appears.



6. Using your stylus or fingers, drag the bottom right intersecting corner, displayed on the screen, down to match your 3" square piece of paper.

7. **Tap OK**

**Well done**, you will now have accurate measurements when using the ruler within the software, and true scaling on screen. This is very helpful in the quilting process.

